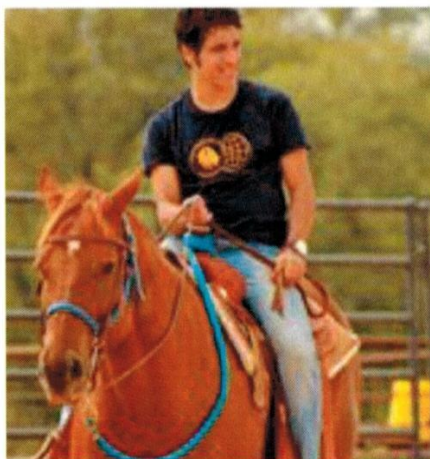


Improve your English Language Skills.

TOEFL Waiver upon successful completion of the Advanced level of the English Language Institute.



A member of the Texas A&M University System



Immerse yourself in American Culture.

Application Deadline

Fall

Outside the U.S.....July 1

Inside the U.S.....August 1

Spring

Outside the U.S.....December 1

Inside the U.S.....January 2

Summer

Outside the U.S.....April 15

Inside the U.S.....May 15



English Language Institute

Main Office: 903.886.5273

ELI ADMISSION

Students seeking admission to the ELI must submit:

- Completed Application Form,
- Provide a Bank Verification Letter and/or Sponsorship letter,
- Photocopy of Valid Passport for yourself and any dependents
- Pay Application Fee
- Provide official transcripts in English from last school attended

Conditional Admission

A student may request a letter of limited conditional admission. ELI students interested in academic study must first apply to Texas A&M-Commerce. The application will be reviewed for admission upon successful completion of the advanced level of the ELI program.



Academic English Program

The Academic English Program is the choice of students who wish to pursue a graduate or undergraduate degree. Students may enroll in the 16-week Academic English Program in the fall or spring, or the more intensive 8-week summer program.

Excel in your degree program.

Cost Per Semester

Fall/Spring/Summer

Tuition.....\$3,910

Fees.....\$825

Insurance.....\$613

Books.....\$200

Total.....\$5,548

(Fees are approximate.)

The English Language Institute (ELI) delivers quality instruction to international students to help them meet their personal language goals and assists students in their adjustment to the American university environment. The ELI holds a strong commitment to student success and facilitates instruction by providing services that include advising, direct instruction, conversation partners, and other support activities for its international student community.